

**Notes :**

- SUBJECT TO COUNCIL APPROVAL
- ALL MEASUREMENTS TO BE CONFIRMED ON SITE BY THE CONTRACTOR PRIOR TO THE COMMENCEMENT OF WORK

Do not scale off any drawings, Cross reference all drawings, supporting documents & specifications. If any discrepancies occur, contact the designer or contractor before commencing work.  
All plans and associated documents are subject to copyright and cannot be copied or used in any way without the express permission of DP Homes

NOTE:

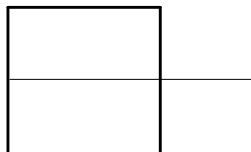
THESE DRAWINGS ARE TO BE READ IN CONJUNCTION WITH THE SPECIFICATION DOCUMENTS, ENGINEERING DETAILS/ DRAWINGS, MANUFACTURER'S SPECIFICATIONS & TRUSS DESIGNERS/PRE-NAIL MANUFACTURER'S DRAWINGS



ARTIST IMPRESSION



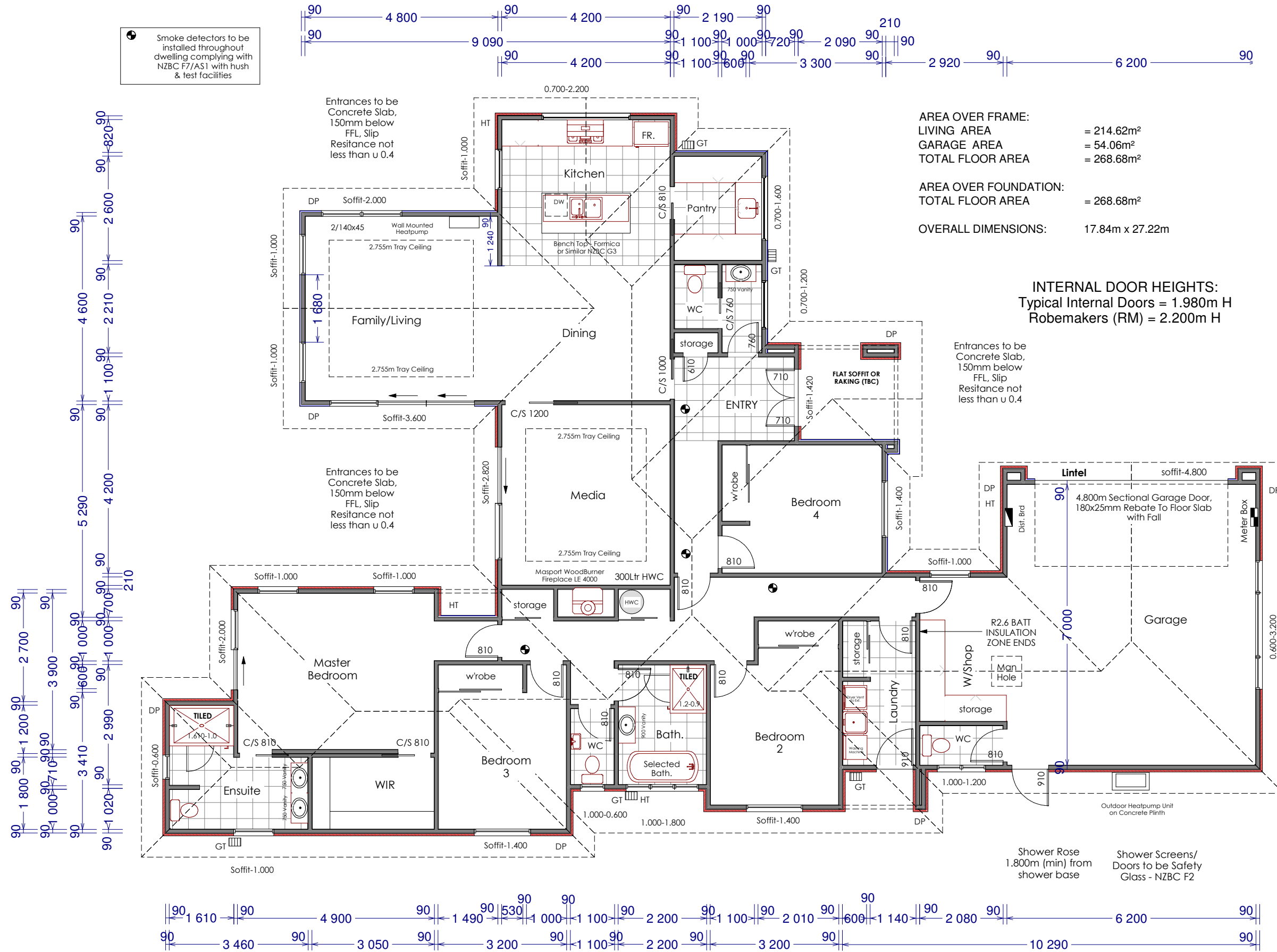
ARTIST IMPRESSION



Cover Index  
SCALE

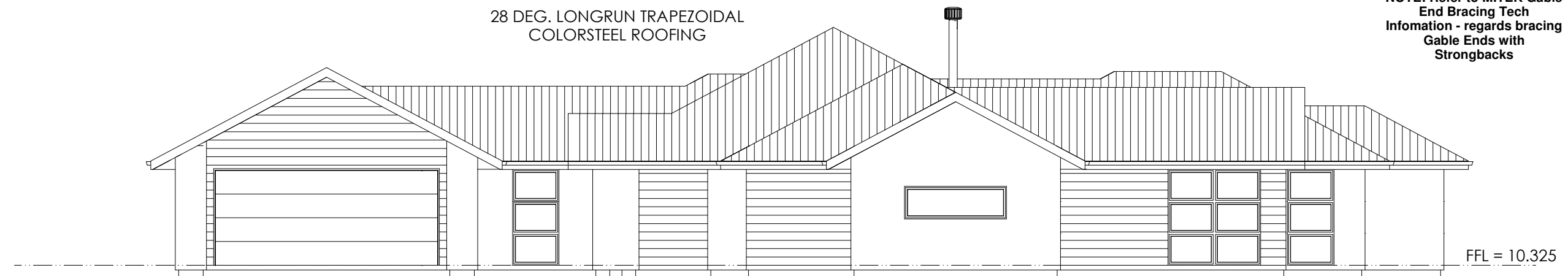
1 OF 21  
2/02/2022  
Drawing No 2173

Smoke detectors to be installed throughout dwelling complying with NZBC F7/AS1 with hush & test facilities



NOTE: Refer to MITEK Gable End Bracing Tech Information - regards bracing Gable Ends with Strongbacks

28 DEG. LONGRUN TRAPEZOIDAL COLORSTEEL ROOFING



FFL = 10.325

EXTERIOR CLADDING SELECTED 50mm INTEGRA PANEL (20mm Nominal Vented Cavity),  
SELECTED HORZ CEDAR W/BOARD CLADDING (20mm Nominal Vented Cavity)

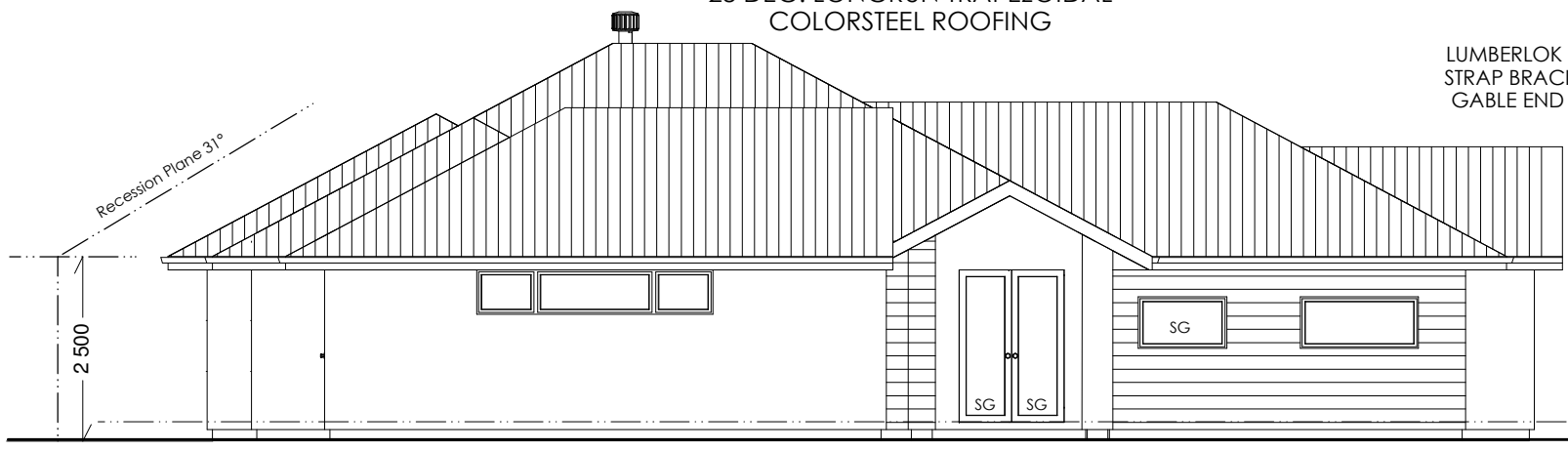
NORTH

28 DEG. LONGRUN TRAPEZOIDAL COLORSTEEL ROOFING

LUMBERLOK METAL STRAP BRACING TO GABLE END ROOF

SELECTED BUILDING WRAP TO FORM WIND BARRIER TO GABLE ENDS

28 DEG. LONGRUN TRAPEZOIDAL COLORSTEEL ROOFING



2 500

2 100

EAST

FFL = 10.325



FFL = 10.325

WEST

SELECTED BUILDING WRAP TO FORM WIND BARRIER TO GABLE ENDS

LUMBERLOK METAL STRAP BRACING TO GABLE END ROOF

28 DEG. LONGRUN TRAPEZOIDAL COLORSTEEL ROOFING



FFL = 10.325

2 500

2 049

SOUTH

EXTERIOR CLADDING SELECTED 50mm INTEGRA PANEL (20mm Nominal Vented Cavity),  
SELECTED HORZ CEDAR W/BOARD CLADDING (20mm Nominal Vented Cavity)



Elevations

SCALE 1:100 @ A3

6 OF 21

2/02/2022

Drawing No 2173