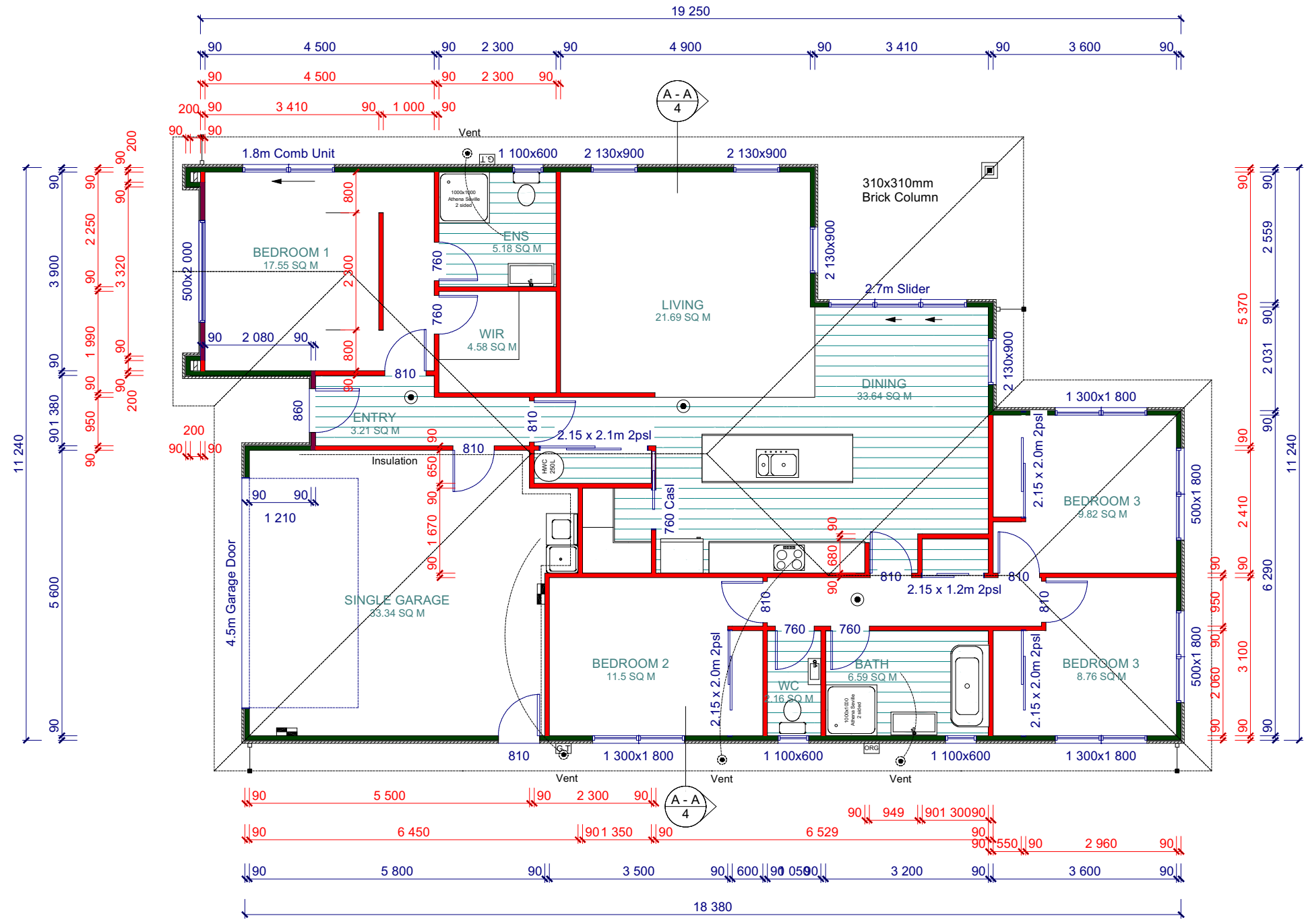


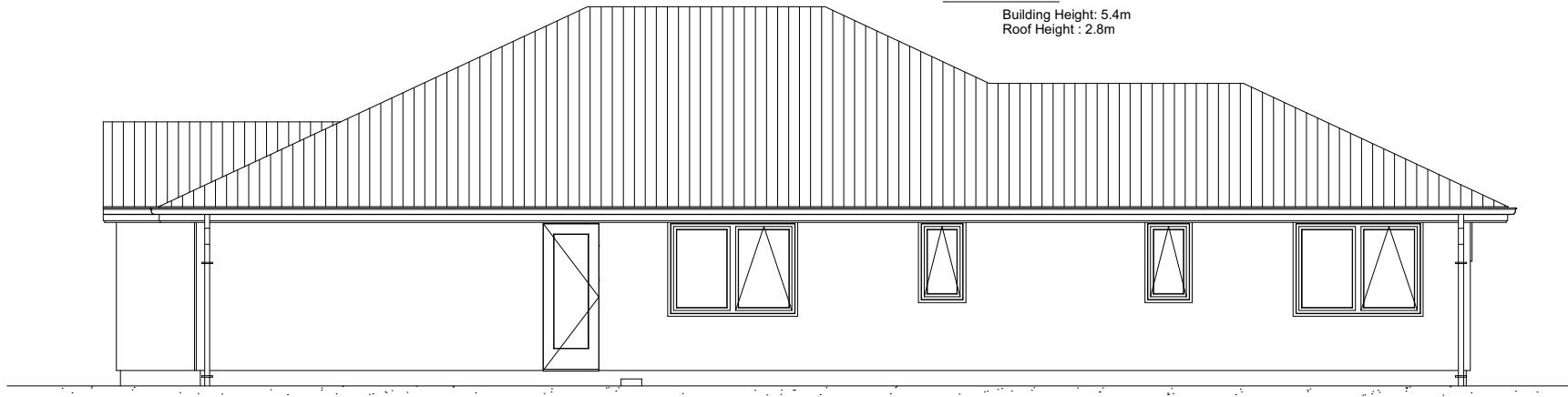


Key To Elevations

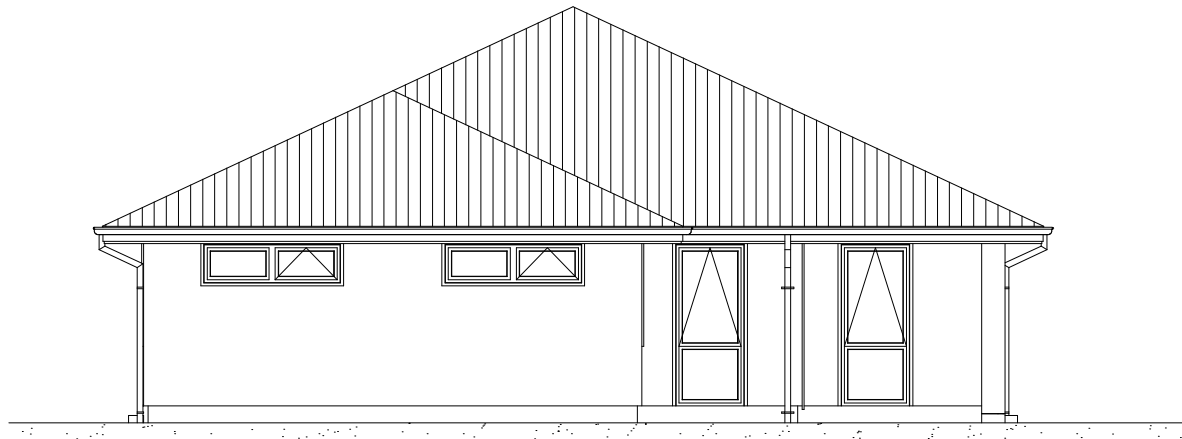
ROOF & WALL CLADDING	
Roof -	25° Coloursteel Roof
Walls -	Plaster Cladding on a 20mm Cavity Linea Oblique Weatherboards on a 20mm Cavity
Area O/V-	186m ² Veneer



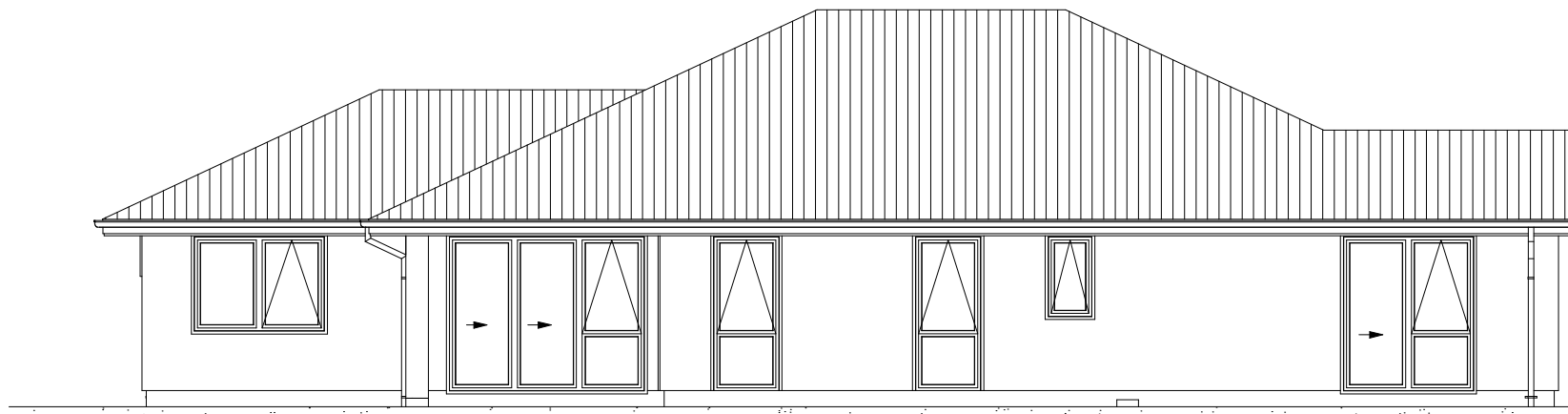
Building Height: 5.4m
Roof Height : 2.8m



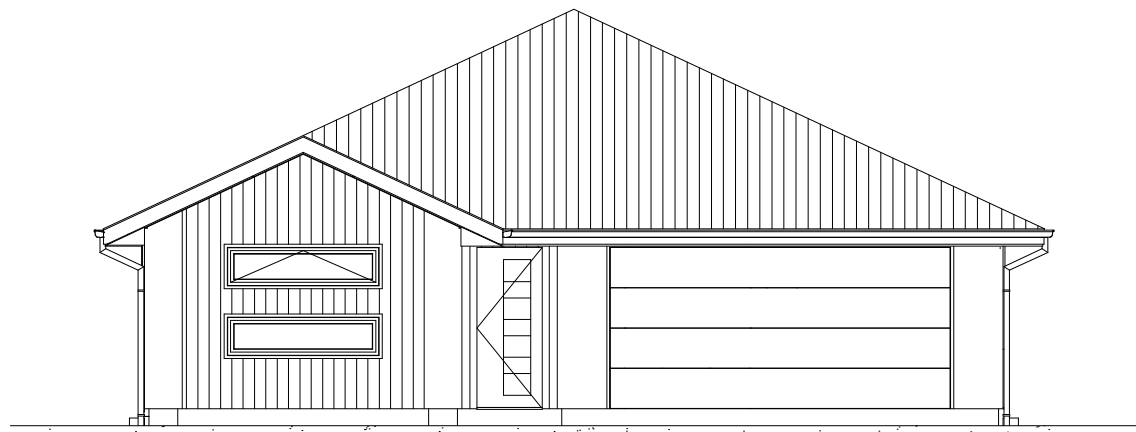
Elevation A



Elevation B



Elevation C



Elevation D